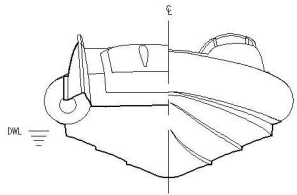
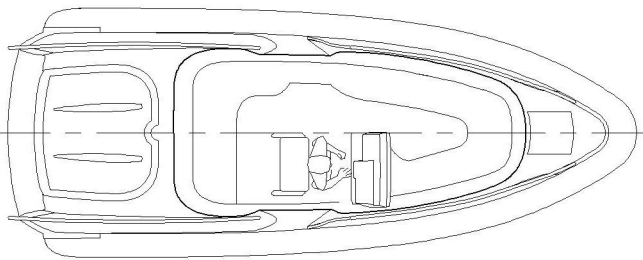


SHEER ELEVATION



BODY PLAN



PLAN VIEW

PRINCIPAL PARTICULARS

- LENGHT OVERALL 6.50 m
- BREADTH OVERALL 2.60 m
- STOWAGE HEIGHT..... 1.50 m

- PAX.NO. 8 OFF

- SPEED (MAX) 45 KTS
- FUEL 55 GAL