

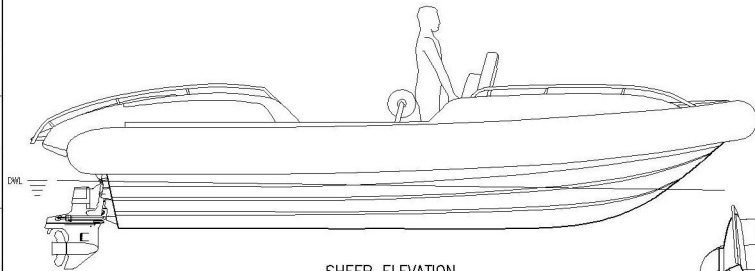
PRINCIPAL PARTICULARS

LENGTH OVERALL 7.50 m
BREADTH OVERALL 2.60 m
STOWAGE HEIGHT 1.50 m

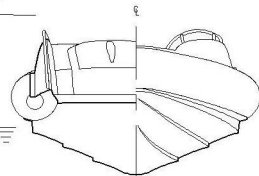
PAX.NO. 10 OFF

SPEED (MAX) 48 KTS

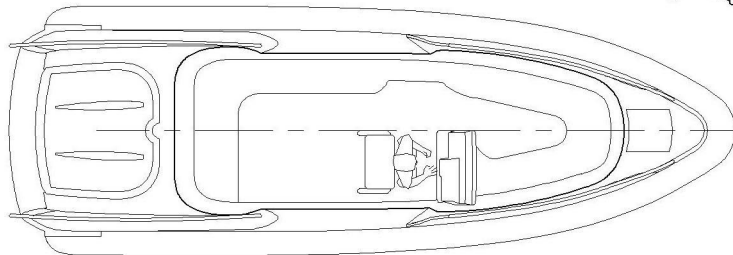
FUEL 55 GAL



SHEER ELEVATION



BODY PLAN



PLAN VIEW